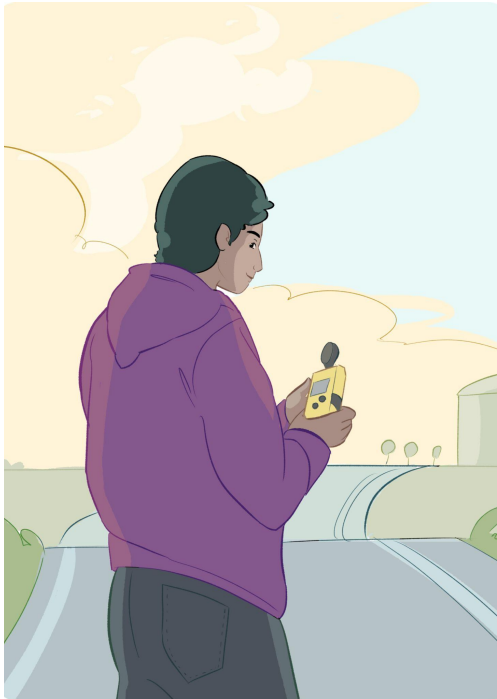




## SensJus Visual Participant Information Sheet



**Project title:** *SensJus* - 'Sensing for Justice'.  
Marie Skłodowska-Curie grant n. 891513.

**Host institution:** The European Commission Joint Research Centre (JRC), Digital Economy Unit, Italy. The JRC is the science and knowledge service that provides independent scientific advice and support to European Union (EU) policy.

**Researchers:** Dr Anna Berti Suman and Dr Sven Schade. See

<https://sensingforjustice.webnode.it/about-us/>

**Visual summary:** a 'civic sentinel' monitoring radiation in the air around a factory



### Introduction

My name is Anna Berti Suman. I am a researcher at the European Commission JRC, Italy, together with Dr Sven Schade. Our project is called ***SensJus*** ('Sensing for Justice'). You can find out more about the project here:

<https://sensingforjustice.webnode.it/>.

The project is funded by the EU.

Our research focuses on **how people use monitoring technologies or their senses to find evidence** of environmental damage and use this evidence in **environmental litigation or mediation**. We call these practices '**citizen sensing**'. We explore whether and how citizen sensing can be **an effective new way** to find evidence about environmental wrongdoing.



Environmental litigation = court cases against companies or public bodies that harm the environment.  
Mediation = ways to address the problem outside the court.



## Invitation

You are invited to take part in **our research on citizen sensing** under the SensJus project, as an expert or as a participant. Before you decide, you should **understand why** the research is done and what it will involve. Please take time to **read** the following information carefully and **discuss** it with others if you want. If there is anything that is not clear or if you would like more information, please **ask us**.



## What is the purpose of our research?



Imagine a **fisherwoman** wants to claim that a river is polluted and she takes some samples as **evidence**. We want to find out whether and to what extent **citizen sensing can be used as a source of evidence in environmental litigation** and as a **resource to facilitate mediation of an environmental problem**.



## Why are we inviting you to take part?

We are inviting you to take part in this research because:

- you are an **expert** on citizen sensing, and/or
- you **know about** a citizen sensing initiative due to your job, and/or
- you are **taking part** or you took part in a citizen sensing initiative.

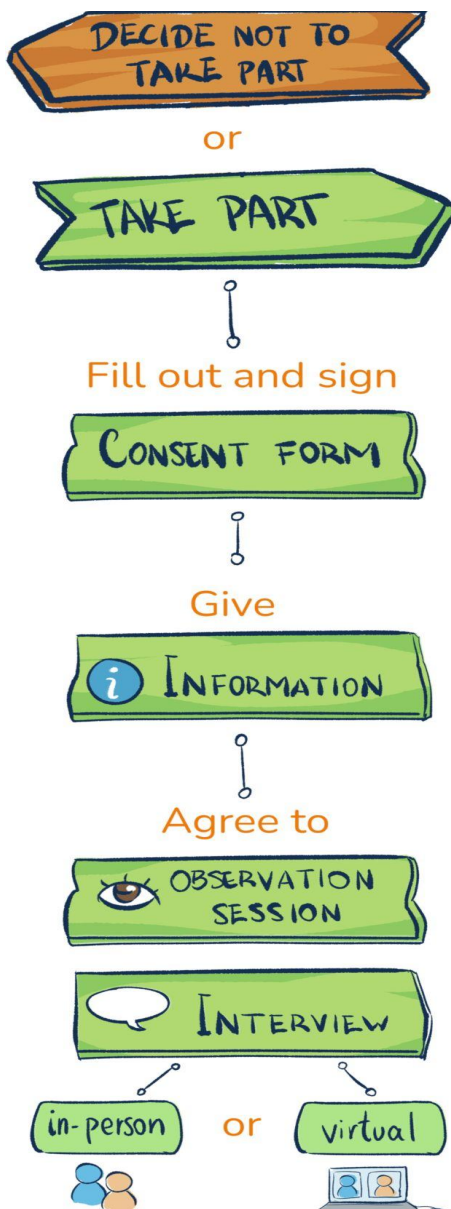


### Do you have to take part?



No. Your participation is **entirely voluntary**. You decide whether or not to take part. If you take part, you can still **withdraw at any time** and without giving a reason.

### If you decide to take part, what do you have to do?



- We will ask you to fill out and sign a **consent form**.
- Right after, we will ask you for **some background information** about your involvement in or experience of citizen sensing, in order to decide whether to proceed with an interview and/or observation session.
- We will invite you for an in-person or virtual **interview** about your knowledge or experience of engaging in/with a citizen sensing initiative. We might **take notes** and (if you agree) **record** the interview. It will take around 30 minutes or possibly more (depending on your availability).
- If you agree, we might also **follow** you while you run a citizen sensing initiative (observation). This would be in addition to or instead of interviewing you. We might **take notes** and **record** what we observe (for example by taking photographs). But only if all participants agree.



### Why does your contribution matter to us?

You will actively help us to **better understand** the role and impact of citizen sensing on court cases and on mediation, as a means to **identify and address environmental harm**.



### Are there any disadvantages or risks in taking part?



Not really. We **do not expect any risks** to you if you take part in this research. If you fully voluntarily choose to share sensitive and confidential information with us, we will **ensure it is protected**.

If our questions or any part of our research cause you any distress (e.g., re-experiencing previous suffering or forms of 'eco-anxiety'), please let us know via the email address at the end of the form.

### Will your personal information be kept confidential?



All personal information we collect about you during the course of the research will be kept **strictly confidential**. We will collect **only information needed** for the purpose of our research. You will not be identified in any publications or presentations. If you like, though, **you can give your consent to be named or identified in this study**. We will discuss the options together. You can express your preferences in the **consent form** that we will give you.

We will store your personal data **for the time strictly needed** (not exceeding two years from the collection) in electronic format in a safe virtual space owned by the JRC. Anonymized results from our interviews and observations will be stored to ensure long-term preservation of the research, following the **FAIR Data Principles** (Findable, Accessible, Interoperable, and Reusable scientific data).

### What will happen to the results of the research?

The **results** will form part of the SensJus project and its findings. These will be **shared through openly accessible publications and presentations**. If you would like to, just **let us know** and **we will inform you about these results** through the communication channel of your choice.





## What procedure will we follow for processing personal data?



Any personal data you voluntarily share with us will be processed in accordance with EU data protection rules, namely **EU Regulation 2018/1725** on the protection of natural persons with regard to the processing of personal data by EU bodies.

This regulation aligns data processing by EU bodies with the guarantees of the **European General Data Protection Regulation (GDPR)**. Also, the data protection officer at the JRC will keep **records of our data processing activities** for this project. We can share details of this with you if you want.



### Contact details



If you have any questions or concerns regarding your participation in this research, please contact Anna Berti Suman at [Anna.BERTI-SUMAN@ec.europa.eu](mailto:Anna.BERTI-SUMAN@ec.europa.eu).